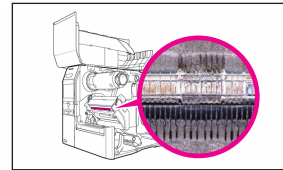
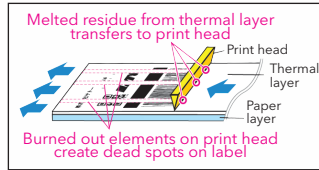


## Reduce operating costs by using genuine SATO consumables

An increasing number of printer errors are being caused by heat buildup in the printing elements.  
This problem is **especially significant for printers using non-SATO labels**.



Print head burnout



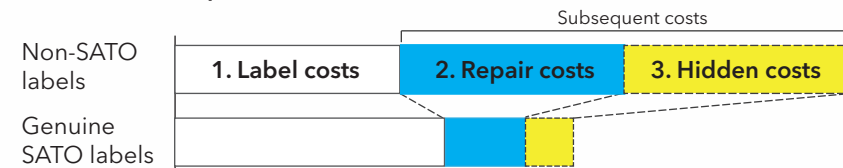
Transfer of label residue



Voids in printed image

## Operating Costs = Label Costs + Repair Costs + Hidden Costs (lost opportunities)

### Cost comparison: Non-SATO VS. Genuine SATO labels



After including the subsequent costs, buying SATO labels becomes a better deal!

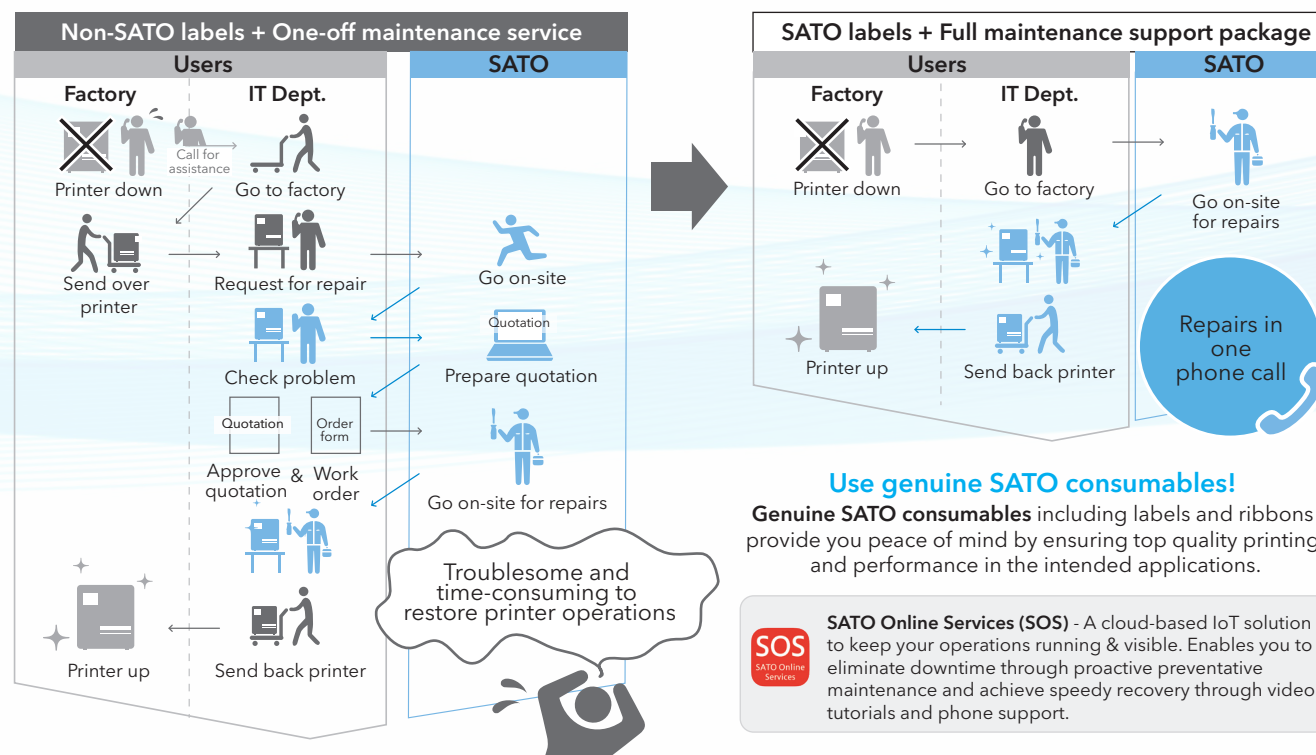


### 2 Repair costs = Cost of printer parts fixed/replaced + Service fee + Destination charge

Enjoy savings on repair costs as printers break down less often when using SATO labels

### 3 Hidden costs = Profits / Opportunities lost during printer downtime

Join our full maintenance support package to cut hidden costs. What's more, reduce downtime with SATO Online Services (SOS)\*!

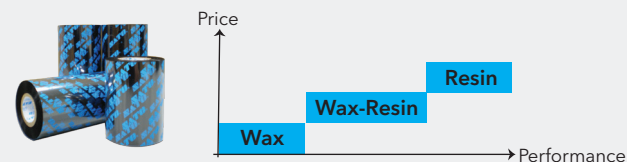


### Use genuine SATO consumables!

Genuine SATO consumables including labels and ribbons provide you peace of mind by ensuring top quality printing and performance in the intended applications.

**SATO Online Services (SOS)** - A cloud-based IoT solution to keep your operations running & visible. Enables you to eliminate downtime through proactive preventative maintenance and achieve speedy recovery through video tutorials and phone support.

## Choose the right ink ribbon



Wax	Low cost, low resistance to harsh conditions
Wax-Resin	Good print quality when used for high-speed printing
Resin	High-resistance against harsh conditions and solvents

SATO provides consultation to find the best ribbon to match your label material and application.

## Customised designs for different applications

Our design team will work closely with you to fully understand your requirements so as to create the best design to serve your labelling needs. Here are some of our designs:



**SATO ASIA PACIFIC PTE. LTD.**

11 Ubi Road 1, #03-01, Meiban Industrial Building, Singapore 408723  
Tel: +65 6271 5300 Fax: +65 6273 6011 Email: sales-sap@sato-global.com



Version: November 2018 ©2018 SATO Asia Pacific Pte. Ltd. All rights reserved.  
Specifications subject to change without notice. Any unauthorized reproduction of the contents of this presentation, in part or whole, is strictly prohibited.  
SATO is a registered trademark of SATO Holdings Corporation and its subsidiaries in Japan, the U.S. and other countries. All other trademarks are the property of their respective owners.

# One-stop Platform for all your Labelling Needs



[www.satoasiapacific.com](http://www.satoasiapacific.com)



## Production Capability & Asia Network

### State-of-the-art equipment & facilities

With over 70 years experience in the industry and state-of-the-art machines & equipment, we consistently produce top quality, high-performance label products & supplies.

Our label production facilities are ISO9001 & ISO14001-certified.



Checking of thickness consistency



Checking of adhesive bonding & peeling strength



Air-shower facilities in our production factories



### Label factories in Asia

SATO is able to support your labeling needs across Asia. We have multiple production facilities in Asia including China, Indonesia, Japan, Malaysia, Singapore, Thailand and Vietnam.

(As of Oct. 2018)

## Wide Range of Labels and Latest Printing Techniques to Meet your Labelling Needs

### Chemist label

TT

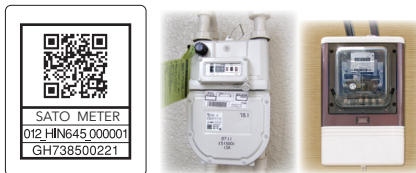
High resistance to heat and scratch & highly durable. Available in white & silver, this is ideal for nameplate labels.



### Ultra label

TT

Can be used for over 10 years in external environments. Suitable for tracking of assets such as utilities meters.



### Techno thermal

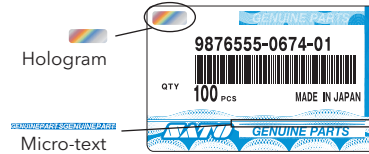
DT

Printed contents on labels less likely to fade even when exposed to bright conditions for long periods of time.



### Hologram and micro-text

Hologram and micro-text can be printed on labels for the purpose of verifying authenticity and preventing counterfeit. Suitable for credit cards, gift vouchers, etc.



### Fluorescent ink

Fluorescent ink that is only visible under UV/black light can be used for printing of company logo, text, etc for authenticity verification.



### Void material

Label leaves behind text/marks/patterns when lifted, providing clear indication of unauthorised attempt to remove label.

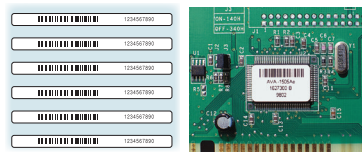


Security

### Heat resistant

TT

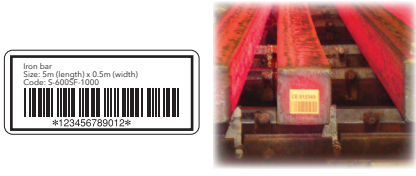
Made of polyimide, labels can withstand up to 260°C for 5 minutes. Suitable for use in electronics industry as labels can endure PCB soldering.



### Ultra heat resistant

TT

Labels can withstand up to 1000°C. Suitable for use in metal industry for process control and mold control.



### Tough neo thermal

DT

Highly resistant to solvents, this type of thermal paper labels provide long-lasting performance even when applied outdoors for 4 weeks or indoors for 2 years.



### Gas cylinder label

TT

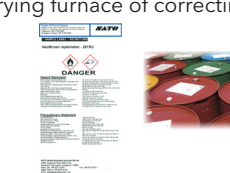
Highly resistant to harsh conditions and suitable for application on non-flat surfaces.



### Oil drum label

TT

Adheres under normal storage condition but label edge floats when temperature reaches 150°C making it easy to peel off in drying furnace of correcting process.



### Tyre label

TT

Designed especially for application on tyre treads, labels stick securely on tyres as the adhesive adheres even on the grooves of the treads.



Special Adhesive

### Ultra low temperature

TT

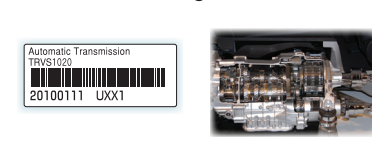
Labels bond well even in temperatures as low as -196°C. Highly suitable for use in food and healthcare applications.



### Oil-tolerant

TT

With special type of adhesive that absorbs oil, labels can stick well on surfaces with engine oil, anti-rust oil, cooking oil, etc.



### Textured surface label

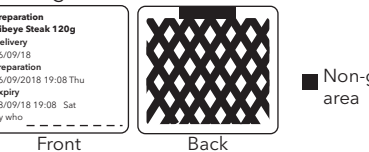
TT

Labels with this special type of adhesive adhere well on textured surfaces such as concrete and wood.



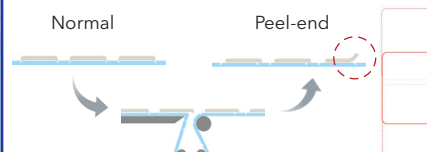
### Pattern glue

Strength of glue is adjusted by controlling glue pattern printed at the back of label. Quick Service Restaurant users can avoid leaving glue and paper residue when removing labels from food rotation containers.



### Peel-end

This is a special technique used to produce labels that can be peeled off easily when used with dispenser or auto-labellers.



### Die-Cut

This special die-cut technique makes it difficult for label to be peeled off. Highly suitable for tamper-proofing.

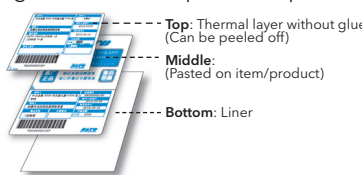


Printing Technique

### 3-layer label

DT

3-layer direct thermal label which consists of thermal top layer, middle layer and liner. Top layer can be peeled off without glue after label is pasted on products.



### Tag / Ticket / Voucher

Non-glue materials such as tags, tickets and vouchers produced by our label factories can be used for variable printing using our barcode printers.



### Silicone-free label

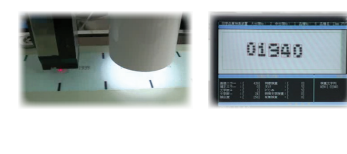
TT

Produced in clean room environment (class 10,000), this type of labels should be used with plastic-core ribbons.



### Serial number printing

Serial number can be printed at the front or back side of label. After serial numbers are printed, Quality Engineers will check to ensure there is no truncated printing, duplication or missing number.



### Printing on ultra-small labels

Highly accurate and precise printing can be done on label as small as 3mm x 7mm using our HR2 printer. Ideal for applying on electronic components and PCBs.



Tough, Durable

Special Material