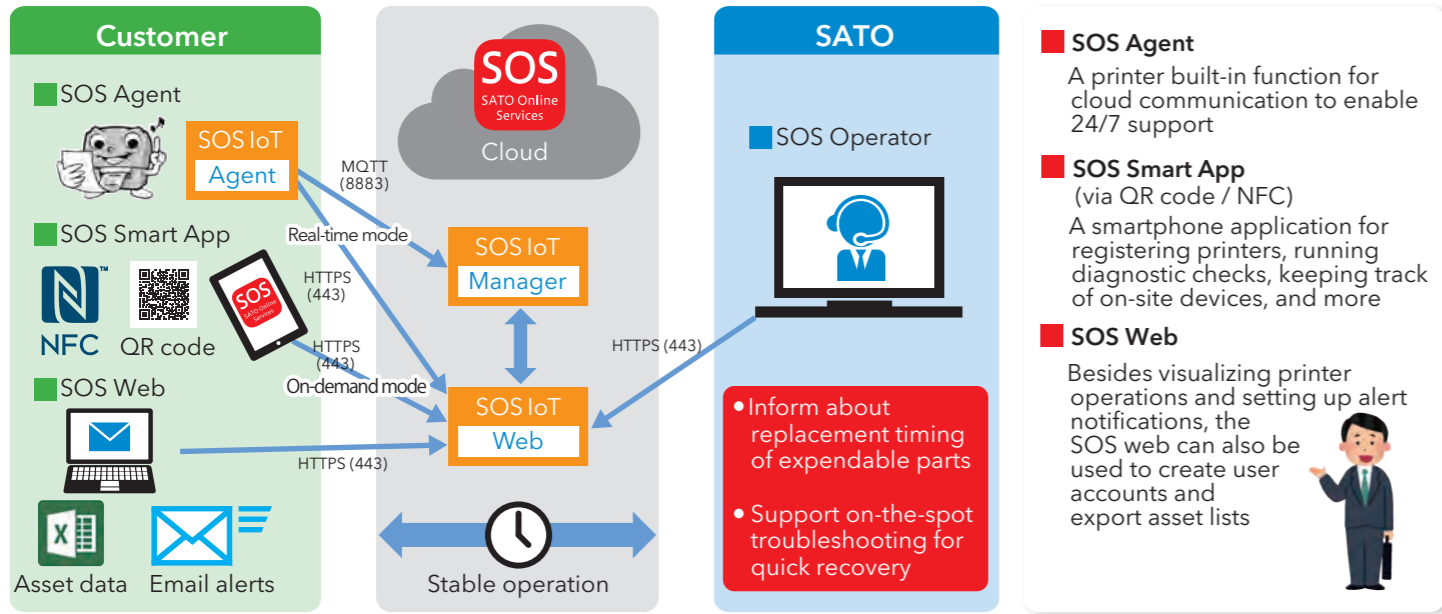


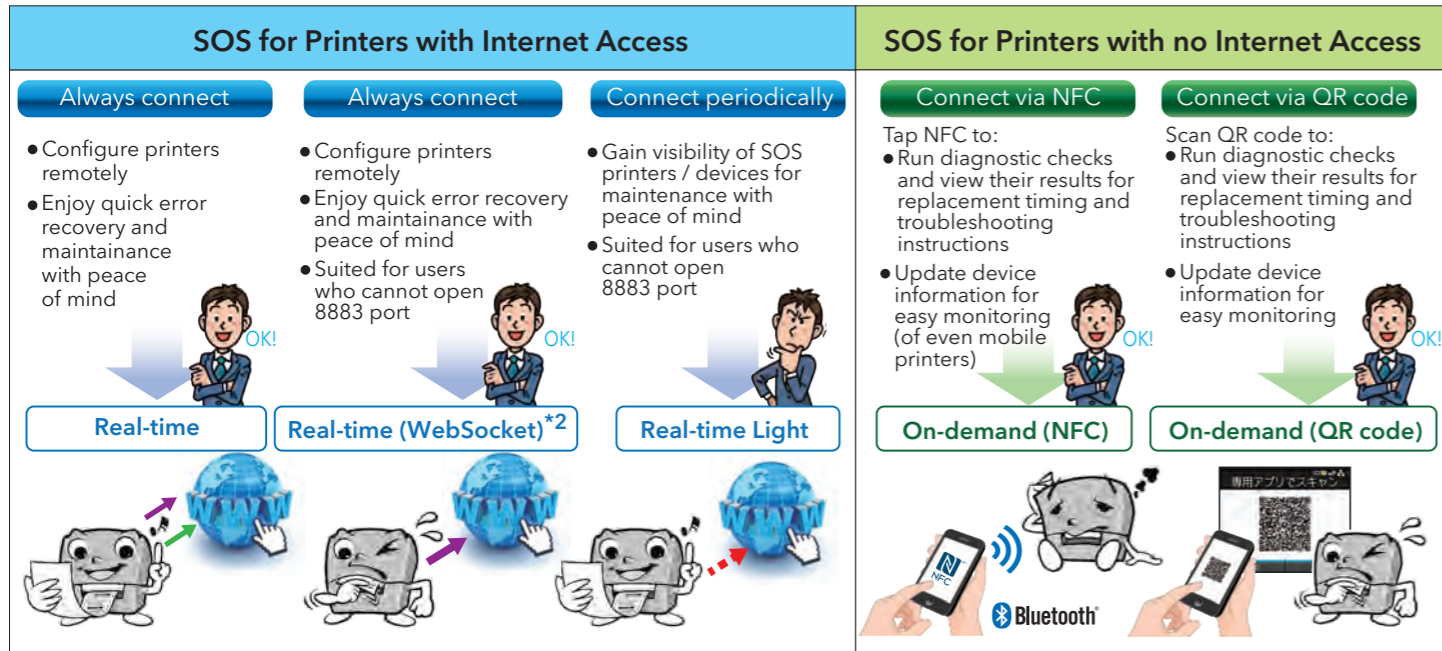
# SOS Cloud and Smart App for Complete Printer Support



- SOS Agent**  
A printer built-in function for cloud communication to enable 24/7 support
- SOS Smart App**  
(via QR code / NFC)  
A smartphone application for registering printers, running diagnostic checks, keeping track of on-site devices, and more
- SOS Web**  
Besides visualizing printer operations and setting up alert notifications, the SOS web can also be used to create user accounts and export asset lists

**SOS** Offered in **five connection methods** to match diverse printer usage and maintenance needs

Contact your local sales representative to find out more about how you can connect to SOS in your system environment



\*2 Real-time (WebSocket) connection cannot be used on proxy server networks

### About SOS Smart App

Download the app and use it to scan or tap\* your smartphone over the printer's NFC or QR code for a variety of functions

\*NFC-enabled Android devices only

Android

iPhone / iPad

Device Requirement	Android 6.0 or higher Latest iOS version
--------------------	---

For more information, please contact your local SATO office by scanning the QR code below or visit our website [www.satoasiapacific.com](http://www.satoasiapacific.com)



## SATO Online Services

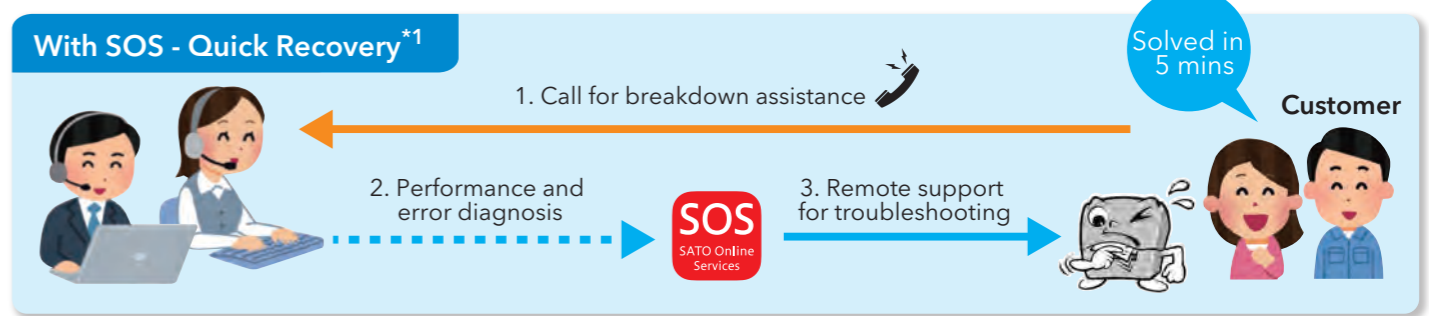
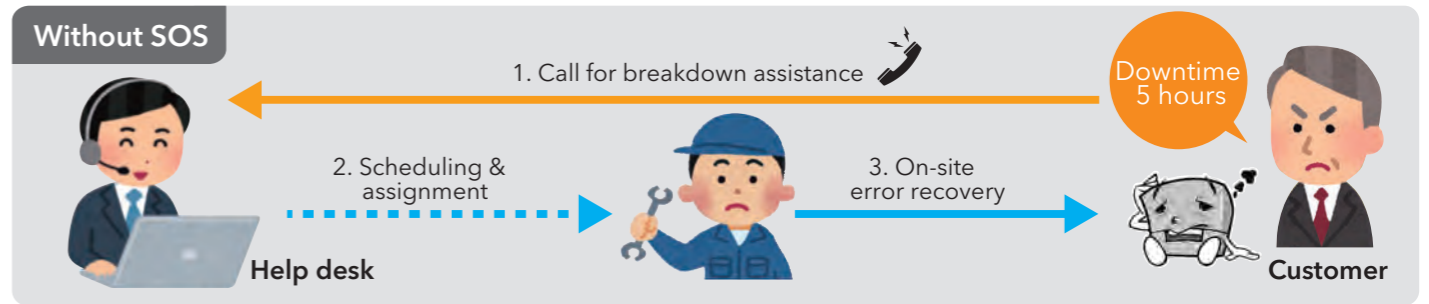
Virtual customer engineer, right on site

**SATO monitors all your printers via cloud** (for registered customers)

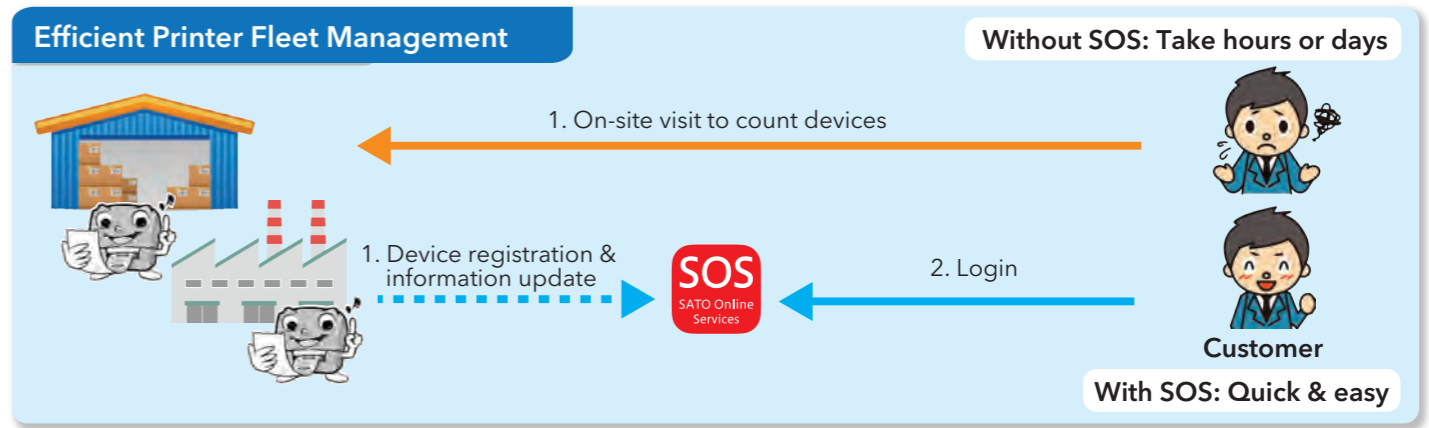
By keeping constant watch on printer status, SOS notifies operator when an expendable part needs replacement, and offers prompt and effective resolution to problems, reducing downtime significantly

**Cut 86%** industrial printer downtime and **83%** print & apply machine **downtime!** \*

\*Based on survey conducted by SATO in Japan



\*1 Level of support may vary depending on region / location

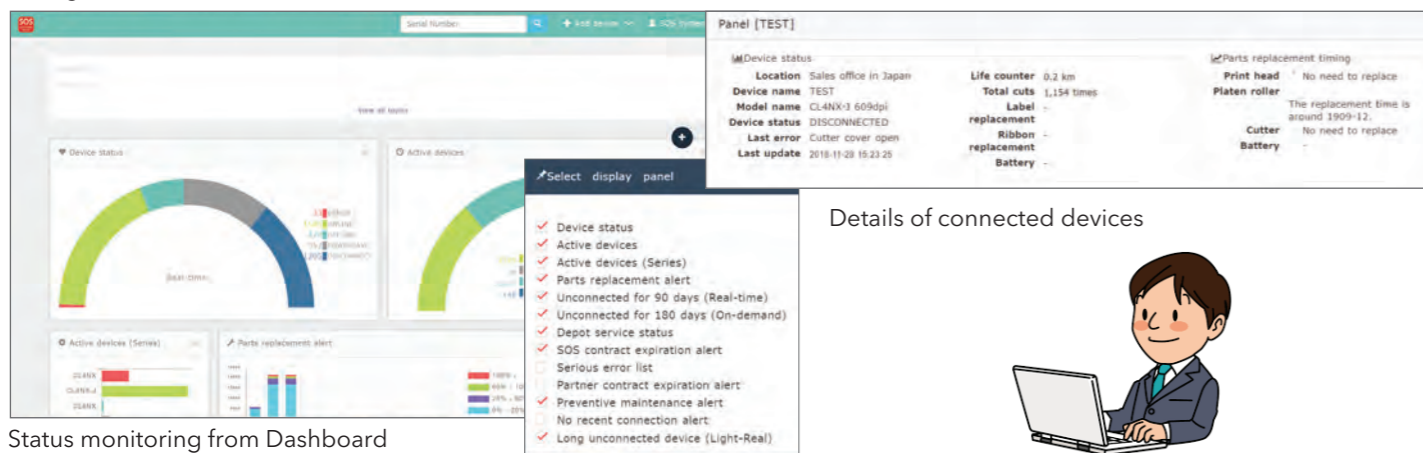


## Visibility with SOS Web

### Main Features

#### 1. Monitor printers centrally

See operation status, printed mileage, maintenance prediction of expendable parts, and other data for all registered printers at a glance



Status monitoring from Dashboard

Series	Last connection date	Country	Status	Model name	Life counter	Print head usage ratio	Next service timing (Pri)
CL4NX	2019-02-21 13:36:22	Thailand	ONLINE	CL4NX 305dpi	36.8 km	1.4 %	2022-10
CL4NX	2019-02-21 13:31:32	China	ONLINE	CL4NX 305dpi	0.3 km	0.7 %	2073-04
CL4NX	2019-02-21 13:37:42	China	ONLINE	CL4NX 305dpi	10.3 km	20.6 %	2021-05
CL4NX	2019-02-21 13:35:07	Malaysia	ONLINE	CL4NX 305dpi	93.0 km	79.3 %	2019-03
CL4NX	2019-02-21 13:31:59	Thailand	ONLINE	CL4NX 305dpi	25.4 km	25.4 %	2021-02
CL4NX	2019-02-21 13:40:42	Viet Nam	ONLINE	CL4NX 305dpi	3.2 km	6.8 %	2026-01
CL4NX	2019-02-21 13:27:45	Viet Nam	ONLINE	CL4NX 305dpi	52.0 km	30.0 %	2020-11
CL4NX	2019-02-21 13:35:48	Malaysia	ONLINE	CL4NX 305dpi	66.4 km	100.0 %	2019-01
CL4NX	2019-02-21 13:37:25	Viet Nam	ONLINE	CL4NX 305dpi	1.6 km	3.4 %	2039-04
CL4NX	2019-02-21 13:33:14	China	ONLINE	CL4NX 305dpi	10.3 km	0.1 %	2073-03
CL4NX	2019-02-21 13:30:51	Malaysia	ONLINE	CL4NX 305dpi	1.5 km	3.0 %	2047-09

#### 2. Set up email notifications

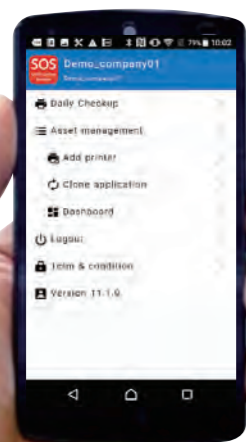
Configure SOS to send emails on printer errors (involving e.g. print head, cutter, paper end, ribbon end), alerts and warnings

#### 3. Manage printer and network settings

View and change print speed, print darkness, print position and network settings from anywhere, anytime

## Convenience and Portability with SOS Smart App

SOS Smart App



**Daily Checkup:** Perform diagnostic scan of SOS-supported printers

#### Other functions include

**Asset management:** Keep track of all devices, even the ones in sleep mode

**Add printer:** Register printers for connecting to SOS

- Real-time connection
- On-demand connection

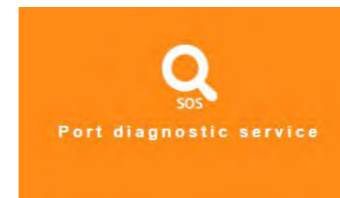
**Clone application:** Clone and transfer printer settings via NFC

**Dashboard:** Access dashboard to check printer registration

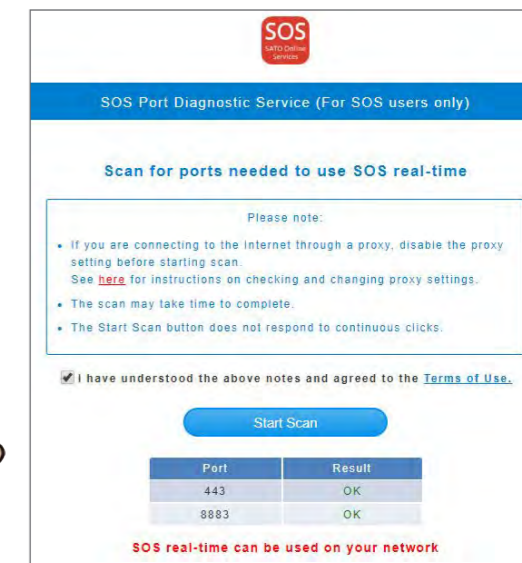


## Simple Setup

1. Check your network environment by visiting SOS portal site ([www.sato-sos.com/en](http://www.sato-sos.com/en)) and clicking 'Port Diagnostic Service' menu



2. Contact your local SATO office to create an SOS account
3. Log in to your account
4. Register your printers to start using SOS



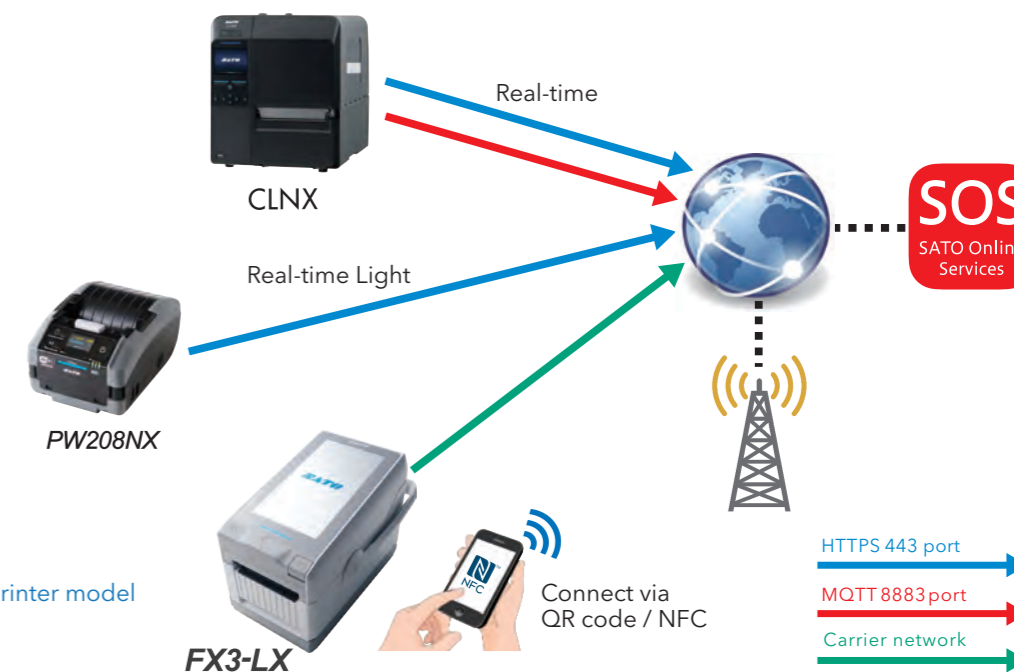
## Flexible Operating Modes

#### For network printers

- Real-time (direct MQTT or MQTT over WebSocket)
- Real-time Light \*Remote configuration of printers from the cloud not supported

#### For non-network printers

- On-demand (QR code or NFC)
- \*SOS Smart App required



Operating mode options vary by printer model  
Refer to SOS website for details

## Security

#### A cloud system of the highest global standards

- Cloud server with the world's highest-level system security, integrity and availability
- Attained international standards such as ISO/IEC 27001, PCI DSS and SOC 1
- Passed vulnerability assessment using ASVS (Application Security Verification Standard)

#### Communications protected by data encryption

- Encrypt all transmitted data with SSL (Secure Socket Layer) and TLS (Transport Layer Security) protocols to prevent spoofing

#### Minimal network load

- Use MQTT, the choice protocol for IoT and M2M communications
- \*MQTT (Message Queuing Telemetry Transport) is a simple and lightweight messaging protocol used over a TCP/IP network and suited to sending/receiving short, frequent messages

