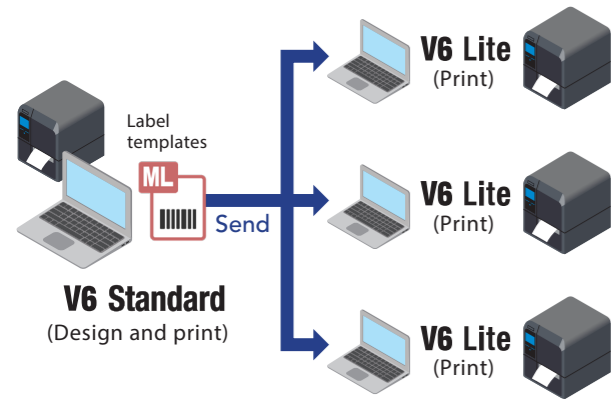


Multi LABELIST V6 Lite

Lightweight software for printing only.



Multi LABELIST Component

Tool that can be used to build custom Windows desktop applications for direct printing.

Details

- 1 Works with common programming languages such as Visual Basic because it is a .NET component.
- 2 Helps users easily design label templates in Multi LABELIST and print them directly without using printer commands.
- 3 Supports various interfaces.
- 4 Enables monitoring of printer status and checking for issues such as paper end. (SATO printers only)

*Multi LABELIST Component is license-free to use.

Product comparison

Functions	V6 Standard	V6 Lite	Component
Design label templates for SATO printers	✓	×	×
Print labels via SATO printers	✓	✓	✓
Customize data entry window	✓	×	×
Convert templates created by older Multi LABELIST versions	✓	×	×
Import data for printing	✓	✓	×
Import data from watch folders to trigger printing	✓	✓	×
Specify conditions for assigning templates and print assigned templates	✓	✓*1	×

*1 The Lite version only prints assigned templates. It cannot be used to specify conditions for assigning templates.

System requirements

	Operating system	CPU	RAM	Hard disk space	Display resolution	Display language
V6 Standard	64-bit OS	Minimum 2 GHz	Minimum 2 GB	Minimum 5 GB	Recommended: 1280 x 1024 (SXGA) or higher	• Japanese • English • Simplified Chinese
V6 Lite	• Windows 11 / 10 • Windows Server 2022 / 2019 / 2016	Recommended: Quad-core processor or higher	Recommended: 4 GB or more	Minimum 500 MB if .NET framework 4.8 has been installed		
Component	Operating system	Development environment	Connectivity			
	32-bit OS • Windows 10 64-bit OS • Windows 11 / 10 • Windows Server 2022 / 2019 / 2016	Recommended: Visual Studio 2022 / 2019 • Programming language: Visual Basic/C# • Development platform: .NET Framework 4.8	Serial, parallel, USB, Ethernet, wireless LAN, Bluetooth® *2 (for direct data transfer *3 and accessing printer driver)			

*2 For use with Microsoft Bluetooth® Stack only. Please check your Bluetooth® stack type with your device maker.

*3 For SATO printers only. Not supported when connected via parallel port.

For supported printers, barcode symbologies and more information, scan here.



Contact your local SATO office to start using Multi LABELIST with a 30-day free trial.

SATO
Powered On Site /

SATO-310132

能力 (kw) 28.0
消費電力 (kw) 10.3
運転電流 (A) 34.1
製造年 20XX
製造番号 ST0036

サトー電器

高度管理医療機器 | 特定保守管理医療機器

一般名称 汎用輸液ポンプ
製造者 サトー輸液ポンプ NY-001
製造番号 42345B-2 医療機器承認番号 20900XXX
製造販売者 株式会社サトー
CS1-128

(01)04912345678904(21)42345B-2

電源 AC 100V~ 50/60Hz, DC12-5V
消費電力 220VA (AC電源使用時)
消費電力 11W (DC電源使用時)
設置形式 クラス1又は内部電源機器CF型

原材料 1001 開封済
ベーキングパウダー

仕入先 1234 ロットNo.
SATO LOT1234567890

賞味期限 XX/07/31
開封後使用期限 XX/06/12

Chelsea Bun

Ingredients: **White flour**, veg marg, **milk powder**, sugar, **eggs**, cinnamon, water, currants, yeast.

Use By: 12/03/20XX

HAPPY DELI 01255 26717
4, Eade St. Tring, HE1 2H

Label design and printing software Multi LABELIST V6

Item Name : ABCD
Manufacturing Date : 20XX.03.10
Expired Date : 20XX.12.01

(01)49931910031022(17)250310(10)A123

暮の内弁当

消費期限: XX年 2月23日 午前11時
賞味期限: XX年 2月22日 午前11時 598円

栄養成分表示 1食(300g当り) 熱量 550kcal 蛋白質 18.2g
脂質 16.7g 炭水化物 160.5g 食塩相当量 4.2g (推定値)

名称: お弁当
原材料名: 鶏肉(国産)、鶏卵、小麦(国産)、人参、ピーマン、その他、糖類(エシプライ)、ホホトシダ、タンパク質、付け合わせ、調味料(アミノ酸等)、着色料(紅麹、カラメル)、香料(シソエキス)、増粘剤(リン酸カルシウム)、白濁(水酸化カルシウム)、保存料(ソルビン酸)、酸化防止剤(V.C)、(一部に大豆・小麦・卵・牛乳・さけ・鶏卵・鶏皮を含む)

保存方法: 直射日光及び高温多湿を避け、お早めにお召し上がりください。

製造者: サトー電器(株)
〒XXX-XXXX C.C.東△△市△△町××番
販売代理店: サトー電器(株) TEL:0128-XXX-XXX
※本品は冷蔵ラインでは、そばを含む製品を生産しています。

SATO SALE

1325-008-592
現品限り

税込 **¥13,200**
(本体価格 ¥12,000)

2013250085923

290000120006

Cookie Ingredients Label

Chocolate Chunk Cookie
enriched **wheat flour**, sugar, chocolate chunks, brown sugar, vegetable oil blend, **butter, eggs**, invert sugar, **soy flour**, salt, **baking soda**, natural vanilla flavor

M&M Cookie
enriched **wheat flour**, sugar, M&M candies, chunks, brown sugar, vegetable oil blend, **butter, eggs**, invert sugar, **soy flour**, salt, **baking soda**, natural vanilla flavor

CHICKEN BREAST SALAD

Product of USA

PACK DATE: 03.10.XX
SELL BY: 03.12.XX

Net weight 0.52kg
UNIT PRICE 68.99 kg
TOTAL PRICE **€5.99**

Ingredients: Fully cooked chicken, Salad Dressing (Water, Soybean Oil, Corn Syrup, Vinegar, Egg Yolk, Salt, Paprika), Celery, Cucumber, Carrot, Contains: Egg, Soy

Products in this series

To design and print labels:
Multi LABELIST V6 Standard

To print labels:
Multi LABELIST V6 Lite

To build Windows apps:
Multi LABELIST Component

All information in this leaflet is accurate as of February 2023.
Product specifications are subject to change without notice.
Any unauthorized reproduction of the contents of this leaflet, in part or whole, is strictly prohibited.
Windows is a registered trademark of Microsoft Corporation.
Bluetooth® is a trademark of Bluetooth SIG, Inc.
All other software, product or company names are trademarks or registered trademarks of their respective owners.

02.28.2023 C22_0211_v1

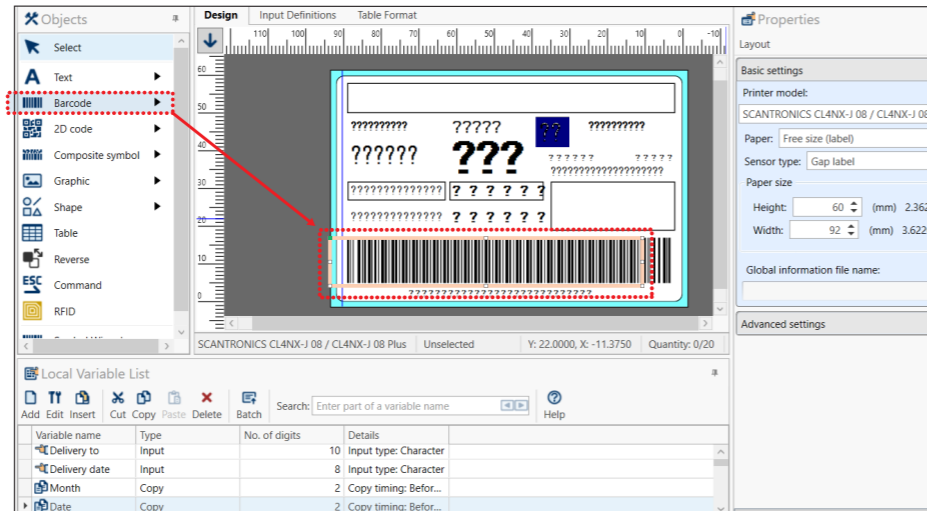
© SATO HOLDINGS CORPORATION. All rights reserved.

The software for all your labeling needs

1. Design labels with ease

Template design window

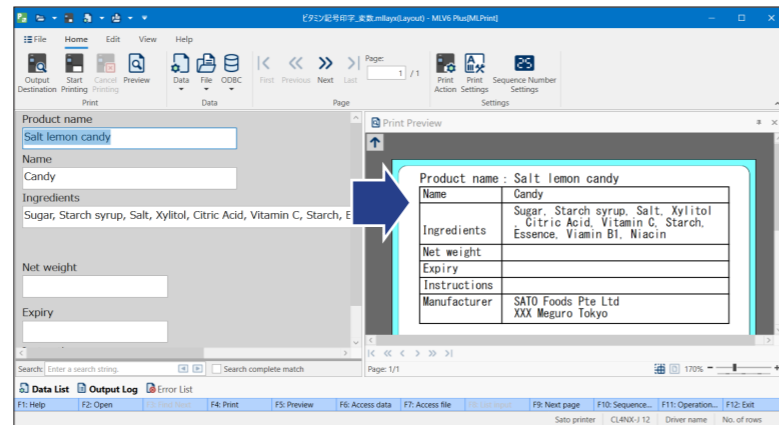
Drag and drop objects such as text and barcode to create or modify template.



2. See a real-time preview

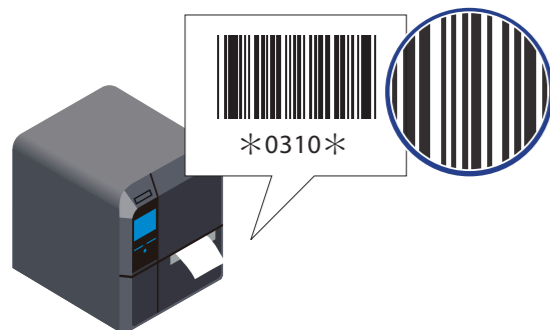
Data entry window

Verify what the printed output will look like as you type to prevent errors.



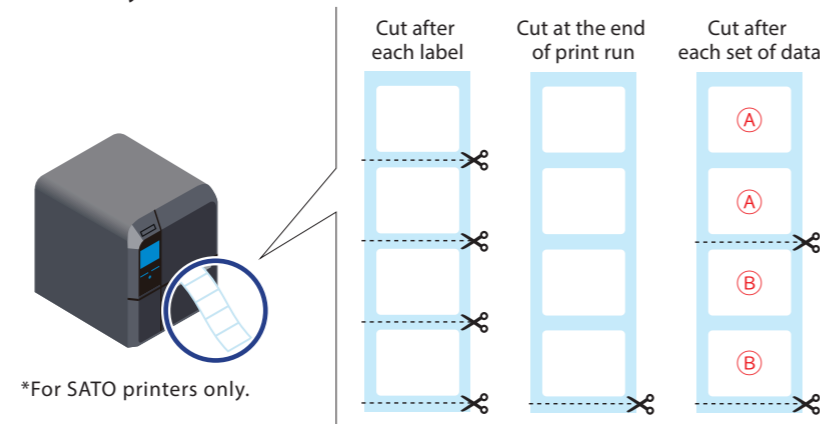
3. Print quality barcodes

Get the best barcode quality, relative to your printer resolution.



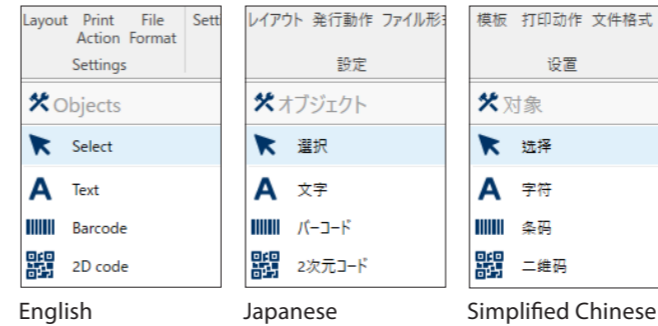
4. Control cut methods for printed labels

Use the software to change cut interval or settings as necessary.

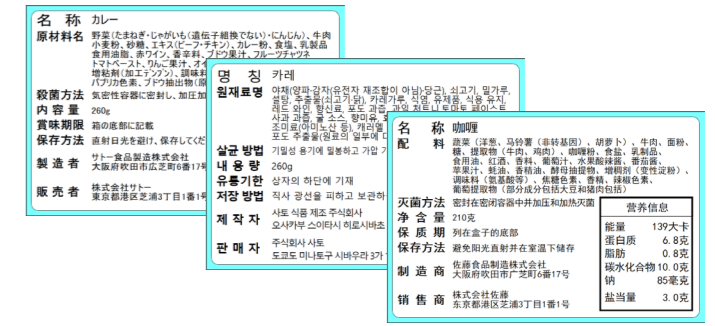


5. Enjoy multi-national language support

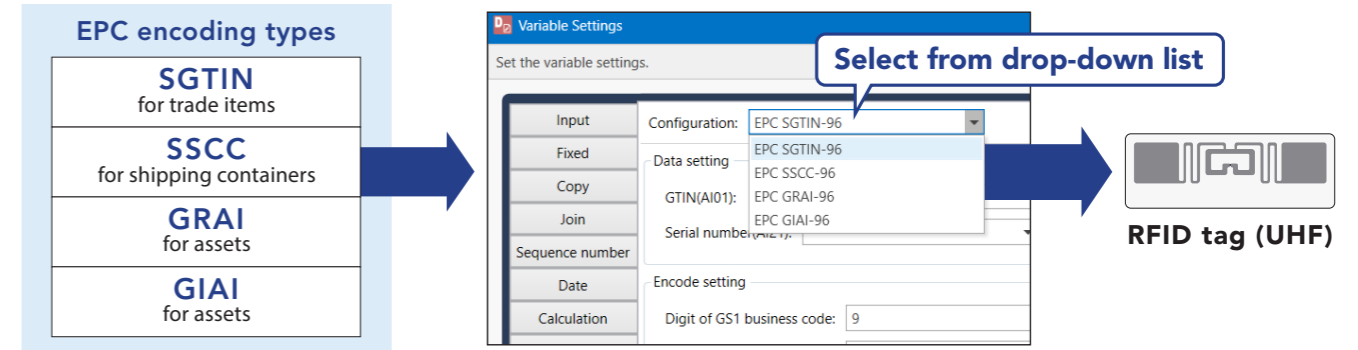
Three display languages



Multiple print languages using Unicode



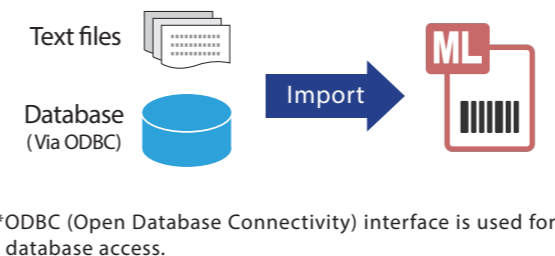
6. Encode RFID tags easily



7. Streamline printing process

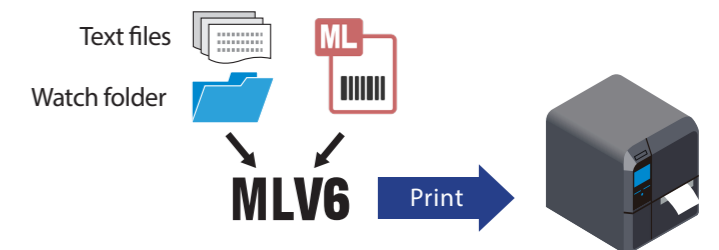
With data import

Import data into label templates for printing.



With watch folder

Watch folders and import data newly added by host applications to automatically trigger printing.



8. Convert old templates to optimize their use



*Printed output may differ after template conversion. Customers are advised to test printing and check print position, barcode readability and other parameters.